

# HOME PAGE



FOR ADULTS WITH MODERATE TO SEVERE CROHN'S DISEASE

## TAKE THE NEXT STEP



I want to learn more about STELARA® >

Learn how STELARA® works and find real patient stories.



I have a STELARA® prescription >

Explore injection resources and additional patient support options.



### IMPORTANT SAFETY INFORMATION

STELARA® (ustekinumab) is a prescription medicine that affects your immune system. STELARA® can increase your chance of having serious side effects including:

#### Serious Infections

STELARA® may lower your ability to fight infections and may increase your risk of infections. While taking STELARA®, some people have serious infections, which may require hospitalization, including tuberculosis (TB), and infections caused by bacteria, fungi, or viruses.

- Your doctor should check you for TB before starting STELARA® and watch you closely for signs and symptoms of TB during treatment with STELARA®.
- If your doctor feels that you are at risk for TB, you may be treated for TB before and during treatment with STELARA®. You should not start taking STELARA® if you have any kind of infection unless your doctor says it is okay.

#### Before starting STELARA®, tell your doctor if you:

- think you have an infection or have symptoms of an infection such as:
  - fever, sweats, or chills
  - muscle aches
  - cough
  - shortness of breath
  - blood in phlegm
  - weight loss
  - warm, red, or painful skin or sores on your body
  - diarrhea or stomach pain
  - burning when you urinate or urinate more often than normal
  - feel very tired
- are being treated for an infection or have any open cuts.
- get a lot of infections or have infections that keep coming back.
- have TB, or have been in close contact with someone with TB.

**After starting STELARA®, call your doctor right away** if you have any symptoms of an infection (see above). These may be signs of infections such as chest infections, or skin infections or shingles that could have serious complications. STELARA® can make you more likely to get infections or make an infection that you have worse. People who have a genetic problem where the body does not make any of the proteins interleukin 12 (IL-12) and interleukin 23 (IL-23) are at a higher risk for certain serious infections that can spread throughout the body and cause death. People who take STELARA® may also be more likely to get these infections.

#### Cancers

STELARA® may decrease the activity of your immune system and increase your risk for certain types of cancer. Tell your doctor if you have ever had any type of cancer. Some people who had risk factors for skin cancer developed certain types of skin cancers while receiving STELARA®. Tell your doctor if you have any new skin growths.

#### Posterior Reversible Encephalopathy Syndrome (PRES)

PRES is a rare condition that affects the brain and can cause death. The cause of PRES is not known. If PRES is found early and treated, most people recover. Tell your doctor right away if you have any new or worsening medical problems including: headache, seizures, confusion, and vision problems.

#### Serious Allergic Reactions

Serious allergic reactions can occur. Stop using STELARA® and get medical help right away if you have any symptoms of a serious allergic reaction such as: feeling faint, swelling of your face, eyelids, tongue, or throat, chest tightness, or skin rash.

#### Lung Inflammation

Cases of lung inflammation have happened in some people who receive STELARA® and may be serious. These lung problems may need to be treated in a hospital. Tell your doctor right away if you develop shortness of breath or a cough that doesn't go away during treatment with STELARA®.

#### Before receiving STELARA®, tell your doctor about all of your medical conditions, including if you:

- have any of the conditions or symptoms listed above for serious infections, cancers, or PRES.
- ever had an allergic reaction to STELARA® or any of its ingredients. Ask your doctor if you are not sure.
- are allergic to latex. The needle cover on the prefilled syringe contains latex.
- have recently received or are scheduled to receive an immunization (vaccine). People who take STELARA® should not receive live vaccines. Tell your doctor if anyone in your house needs a live vaccine. The viruses used in some types of live vaccines can spread to people with a weakened immune system, and can cause serious problems. **You should not receive the BCG vaccine during the one year before receiving STELARA® or one year after you stop receiving STELARA®.**
- have any new or changing lesions within psoriasis areas or on normal skin.
- are receiving or have received allergy shots, especially for serious allergic reactions.
- receive or have received phototherapy for your psoriasis.
- are pregnant or plan to become pregnant. It is not known if STELARA® can harm your unborn baby. You and your doctor should decide if you will receive STELARA®.
- are breastfeeding or plan to breastfeed. It is thought that STELARA® passes into your breast milk.
- talk to your doctor about the best way to feed your baby if you receive STELARA®.

**Tell your doctor about all the medicines you take**, including prescription and over-the-counter medicines, vitamins, and herbal supplements. Know the medicines you take. Keep a list of them to show your doctor and pharmacist when you get a new medicine.

#### When prescribed STELARA®:

- Use STELARA® exactly as your doctor tells you to.
- STELARA® is intended for use under the guidance and supervision of your doctor. In children 6 years and older, it is recommended that STELARA® be administered by a healthcare provider. If your doctor decides that you or a caregiver may give your injections of STELARA® at home, you should receive training on the right way to prepare and inject STELARA®. Your doctor will determine the right dose of STELARA® for you, the amount for each injection, and how often you should receive it. Do not try to inject STELARA® yourself until you or your caregiver have been shown how to inject STELARA® by your doctor or nurse.

**Common side effects of STELARA® include:** nasal congestion, sore throat, and runny nose, upper respiratory infections, fever, headache, tiredness, itching, nausea and vomiting, redness at the injection site, vaginal yeast infections, urinary tract infections, sinus infection, bronchitis, diarrhea, stomach pain, and joint pain. These are not all of the possible side effects with STELARA®. Tell your doctor about any side effect that you experience. Ask your doctor or pharmacist for more information.

Please click to read the full [Prescribing Information](#) and [Medication Guide](#) for STELARA® and discuss any questions you have with your doctor.

You are encouraged to report negative side effects of prescription drugs to the FDA. Visit [www.fda.gov/medwatch](http://www.fda.gov/medwatch) or call 1-800-FDA-1088.

Requires Adobe® Reader®. [Click here to download](#)

cp-124932v6



© Janssen Biotech, Inc. 2023.

This site is published by Janssen Biotech, Inc., which is solely responsible for its contents. The material on this site is intended only as informational or as an educational aid and it is not intended to be taken as medical advice. The ultimate responsibility for patient care resides with a healthcare professional.

This information is intended for the use of patients and caregivers in the United States and Puerto Rico only. Laws, regulatory requirements, and medical practices for pharmaceutical products vary from country to country. The Prescribing Information included here may not be appropriate for use outside the United States and Puerto Rico.

Third party trademarks used herein are trademarks of their respective owners.

Legal Notice | Privacy Policy | Contact Us | About Janssen Biotech, Inc.

Do not sell my personal information



Last Updated: February 2023

# ABOUT STELARA®

COLLAPSED



Important Safety Information | Prescribing Information | Medication Guide | Información en Español | Healthcare Professionals | Crohn's Disease | Home | About STELARA® | I Have a STELARA® Prescription | Cost Support and More | Resource Guide

## CHOOSE TO MOVE FORWARD WITH STELARA®

Ready to take the next step toward symptom relief? Looking for a treatment option that could fit into your busy schedule? Your path to lasting remission could start when you talk to your doctor about STELARA®.



### RAPID RELIEF

The majority of patients who were treated with STELARA® and were new to or had not failed a biologic saw relief from their Crohn's disease symptoms in as little as **6 weeks**, with noticeable improvement as early as **3 weeks\*** for some.†



### LASTING REMISSION

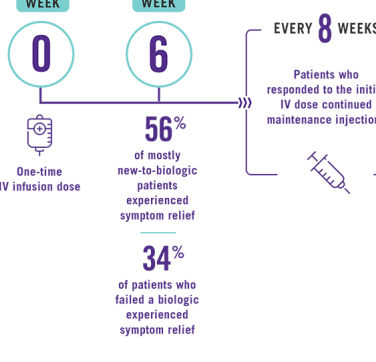
The majority of patients were in remission at **1 year** after responding to the one-time intravenous (IV) infusion dose and continuing on STELARA® treatment.†

\*Symptom improvement was measured differently at weeks 3 and 6.

†Clinical trials of STELARA® included patients who failed or were intolerant to other medications, including a biologic, prior to STELARA®. Individual results may vary. STELARA® is not for everyone. Only you and your doctor can decide if STELARA® is right for you.

## STELARA® RESULTS

### When could I feel better?



### For how long could I feel better?



†After 1 year, patients and healthcare providers knew that STELARA® was being used. This may have increased results. Individual results may vary. STELARA® is not for everyone. Only you and your doctor can decide if STELARA® is right for you.

## LEARN ABOUT DOSING WITH STELARA®



### Start with an IV infusion ONE TIME

STELARA® treatment starts with a one-time IV infusion through a vein in your arm that provides the amount of medication based on your body weight and is administered by a medical professional in a comfortable setting. It takes at least 1 hour to receive the full dose of medicine.

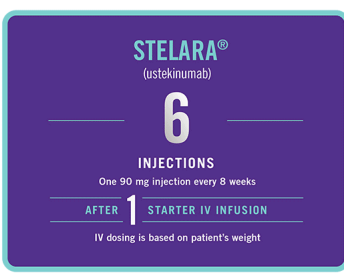


### Keep going with maintenance injections EVERY 2 MONTHS

After the one-time IV infusion, you will receive STELARA® as an injection under the skin (subcutaneous injection) every 8 weeks. STELARA® is intended for use under the guidance and supervision of your doctor. If your doctor decides that you or a caregiver may give your injections of STELARA® at home, you should receive training on the right way to prepare and inject STELARA®.

## THE STELARA® DOSING DIFFERENCE

First 52 weeks of therapy after starter doses



Dosing | Indication

While these factors are important, there are additional considerations for selecting treatment. Please talk to your doctor about treatment options and what might be right for you. This presentation is not intended to compare the safety and effectiveness of these treatments. Please refer to each product's full Prescribing Information for recommended dosing and administration.

†Indicated trademark is registered trademark of its respective owner.

## THE LEGACY OF STELARA®



20+ YEARS

of combined clinical research and 10+ years on the market across indications



500,000+ PATIENTS

are estimated to have been treated with STELARA® for Crohn's disease and other indications in the US†



140,000+ PATIENTS

are estimated to have been treated with STELARA® for Crohn's disease and ulcerative colitis in the US†

†This is based on information licensed from IQWiA™, LAAD claims, NPA, DDD for the period 2009-2021 reflecting estimates of real-world activity and based on custom methodologies developed by Janssen. All rights reserved.

†The estimated number of patients treated with STELARA® in the United States is 121,000+ for CD and 22,000+ for UC.

## MEET 2 STELARA® CROHN'S DISEASE PATIENTS



“Now my symptoms are under control. I feel great—my disease is not the boss of me.”

TERRIE  
Actual Patient

Transcripts: English Español

Individual results may vary.

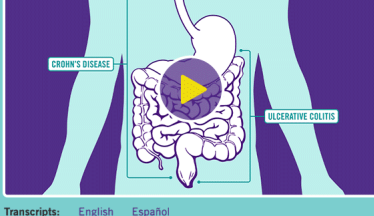
## WHAT IS STELARA® AND HOW DOES IT WORK?

- STELARA® is a prescription biologic medicine
- Many biologics are made from proteins, genes, or antibodies
- Some biologics target enzymes or proteins that may cause inflammation—like the inflammation thought to cause Crohn's disease symptoms

### STELARA® works differently

There are many different naturally occurring proteins in the body that contribute to inflammation. Patients with Crohn's disease are found to have elevated levels of two of these proteins, IL-12 and IL-23.

STELARA® is the only FDA-approved medicine that targets IL-12 and IL-23, which are thought to be associated with gastrointestinal inflammation in Crohn's disease.



Transcripts: English Español

## STELARA® SAFETY

Ask your doctor about the benefits and risks of STELARA®. Prescription medications, including STELARA®, have possible risks involved with treatment, so it's important to discuss them with your doctor.

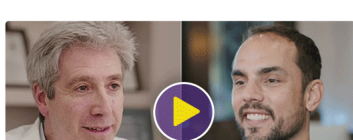
What is the most important information I should know about STELARA®? +

What are the common side effects of STELARA®? +

What should I avoid while receiving STELARA®? +

## IS STELARA® RIGHT FOR YOU? ASK YOUR DOCTOR TODAY.

When it comes to getting control of your Crohn's symptoms, you are your own best advocate. The road to remission starts with an open and honest conversation with your doctor.



“Your relationship with your doctor, your ability to communicate with one another, is as vital as your treatment plan itself.”

Transcripts: English Español

## STELARA® PATIENT BROCHURE

If you want to learn more about STELARA®, please download our patient brochure.

Download

Once you and your doctor have decided STELARA® is right for you, STELARA withMe will help you find the resources you may need to get started and stay on track. We will give you information on your insurance coverage, potential out-of-pocket costs, and treatment support, and identify options that may help make your treatment more affordable.

## STELARA withMe SAVINGS PROGRAM

IF YOU USE COMMERCIAL OR PRIVATE HEALTH INSURANCE TO PAY FOR YOUR MEDICATION — ELIGIBLE PATIENTS PAY \$5 PER DOSE FOR THEIR STELARA® MEDICATION

- Eligible patients using commercial or private insurance can save on out-of-pocket medication costs for STELARA®
- Not valid for patients using Medicare, Medicaid, or other government-funded programs to pay for their medication
- Maximum program benefit per calendar year shall apply
- Terms expire at the end of each calendar year and may change
- Program does not cover the cost to give you your treatment
- See program requirements

Learn More

STELARA withMe is limited to education about STELARA®, its administration, and/or the condition it treats. It is not intended to provide medical advice, replace a treatment plan you receive from your doctor or nurse, or serve as a reason for you to start or stop a treatment.



### IMPORTANT SAFETY INFORMATION

STELARA® (ustekinumab) is a prescription medicine that affects your immune system. STELARA® can increase your chance of having serious side effects including:

#### Serious Infections

STELARA® may lower your ability to fight infections and may increase your risk of infections. While taking STELARA®, some people have serious infections, which may require hospitalization, including tuberculosis (TB), and infections caused by bacteria, fungi, or viruses.

- Your doctor should check you for TB before starting STELARA® and watch you closely for signs and symptoms of TB during treatment with STELARA®
- If your doctor feels that you are at risk for TB, you may be treated for TB before and during treatment with STELARA®
- You should not start taking STELARA® if you have any kind of infection unless your doctor says it is okay.

#### Before starting STELARA®, tell your doctor if you:

- think you have an infection that you have symptoms of an infection such as:
  - fever, sweats, or chills
  - muscle aches
  - cough
  - shortness of breath
  - blood in phlegm
- are being treated for an infection or have any open cuts.
- get a lot of infections or have infections that keep coming back.
- have TB, or have been in close contact with someone with TB.

After starting STELARA®, call your doctor right away if you have any symptoms of an infection (see above). These may be signs of infections such as chest infections, or skin infections or shingles that could have serious complications. STELARA® can make you more likely to get infections or make an infection that you have worse. People who have a genetic problem where the body does not make any of the proteins interleukin 12 (IL-12) and interleukin 23 (IL-23) are at a higher risk for certain serious infections that can spread throughout the body and cause death. People who take STELARA® may also be more likely to get these infections.

#### Cancers

STELARA® may decrease the activity of your immune system and increase your risk for certain types of cancer. Tell your doctor if you have ever had any type of cancer. Some people who had risk factors for skin cancer developed certain types of skin cancers while receiving STELARA®. Tell your doctor if you have any new skin growths.

#### Posterior Reversible Encephalopathy Syndrome (PRES)

PRES is a rare condition that can cause death. The cause of PRES is not known. If PRES is found early and treated, most people recover. Tell your doctor right away if you have any new or worsening medical problems including: headache, seizures, confusion, and vision problems.

#### Serious Allergic Reactions

Serious allergic reactions can occur. Stop using STELARA® and get medical help right away if you have any symptoms of a serious allergic reaction such as: feeling faint, swelling of your face, eyelids, tongue, or throat, chest tightness, or skin rash.

#### Lung Inflammation

Cases of lung inflammation have happened in some people who receive STELARA® and may be serious. These lung problems may need to be treated in a hospital. Tell your doctor right away if you develop shortness of breath or a cough that doesn't go away during treatment with STELARA®.

#### Before receiving STELARA®, tell your doctor about all of your medical conditions, including if you:

- have any of the conditions or symptoms listed above for serious infections, cancers, or PRES.
- ever had an allergic reaction to STELARA® or any of its ingredients. Ask your doctor if you are not sure.
- are allergic to latex. The needle cover on the prefilled syringe contains latex.
- have recently received or are scheduled to receive an immunization (vaccine). People who take STELARA® should not receive live vaccines. Tell your doctor if anyone in your household has a live vaccine. The vaccine used in some types of live vaccines can spread to people with a weakened immune system, and can cause serious problems. You should not receive the MCV vaccine during the one year before receiving STELARA® or one year after you stop receiving STELARA®.
- have any new or changing lesions within your genital area or on normal skin.
- are receiving or have received allergy shots, especially for serious allergic reactions.
- receive or have received phototherapy for your psoriasis.
- are pregnant or plan to become pregnant. It is not known if STELARA® can harm your unborn baby. You and your doctor should decide if you will receive STELARA®.
- are breastfeeding or plan to breastfeed. It is not known if STELARA® passes into your breast milk.
- talk to your doctor about the best way to feed your baby if you receive STELARA®.

Tell your doctor about all the medicines you take, including prescription and over-the-counter medicines, vitamins, and herbal supplements. Know the medicines you take. Keep a list of them to show your doctor and pharmacist when you get a new medicine.

#### When receiving STELARA®,

- Use STELARA® exactly as your doctor tells you to.
- STELARA® is intended for use under the guidance and supervision of your doctor. In children 6 years and older, it is recommended that STELARA® be administered by a healthcare provider. If your doctor decides that you or a caregiver may give your injections of STELARA® at home, you should receive training on the right way to prepare and inject STELARA®. Your doctor will determine the right dose of STELARA® for you, the amount for each injection, and how often you should receive it. Do not try to inject STELARA® yourself or if your caregiver have been shown how to inject STELARA® by your doctor or nurse.

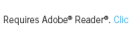
Common side effects of STELARA® include: nasal congestion, sore throat, and runny nose, upper respiratory infections, fever, headache, tiredness, itching, nausea and vomiting, redness at the injection site, vaginal yeast infections, urinary tract infections, sinus infection, bronchitis, diarrhea, stomach pain, and joint pain. These are not all of the possible side effects with STELARA®. Tell your doctor about any side effect that you experience. Ask your doctor or pharmacist for more information.

Please click to read the full Prescribing Information and Medication Guide for STELARA® and discuss any questions you have with your doctor.

You are encouraged to report negative side effects of prescription drugs to the FDA. Visit [www.fda.gov/medwatch](http://www.fda.gov/medwatch) or call 1-800-FDA-1088.

Requires Adobe® Reader®. [Click here to download](#)

cp-1249326



© Janssen, Inc. 2023. All rights reserved.

This site is published by Janssen Biotech, Inc., which is solely responsible for its contents. The material on this site is intended only as informational and is not intended to be used as medical advice. The ultimate responsibility for patient care rests with healthcare professionals.

This information is intended for the use of patients and caregivers in the United States and Puerto Rico only. Laws, regulatory requirements, and medical practices for pharmaceutical products vary from country to country. The Prescribing Information located here may not be applicable to an individual's local laws and regulations.

Third party trademarks used herein are trademarks of their respective owners.

Legal Notice | Privacy Policy | Contact Us | About Us | Feedback

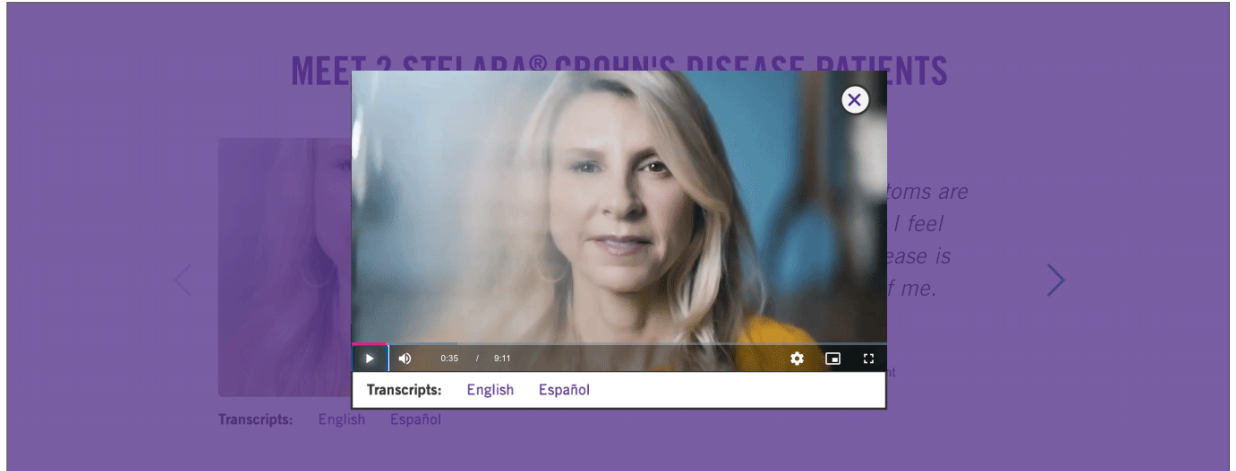
Last Updated: February 2023

Do not use any personal information



# TRANSCRIPT MODALS

ENGLISH



User clicked play button on video thumbnail



User clicked "English", below video thumbnail

# ABOUT STELARA®

STICKY NAV



Results

**Dosing**

How It Works

Safety

professional in a comfortable setting. It takes at least 1 hour to receive the full dose of medicine.

STELARA® is intended for use under the guidance and supervision of your doctor. If your doctor decides that you or a caregiver may give your injections of STELARA® at home, you should receive training on the right way to prepare and inject STELARA®.

## THE STELARA® DOSING DIFFERENCE

First 52 weeks of therapy after starter doses

### STELARA® (ustekinumab)

STELARA® is a prescription medicine used to treat adults 18 years and older with moderately to severely active Crohn's disease.

### HUMIRA®<sup>s</sup> (adalimumab)

HUMIRA® is a prescription medicine used to treat moderate to severe Crohn's disease in adults.

Dosing

Indication

While these factors are important, there are additional considerations for selecting treatment. Please talk to your doctor about treatment options and what might be right for you. This presentation is not intended to compare the safety and effectiveness of these treatments. Please refer to each product's full Prescribing Information for recommended dosing and administration.

<sup>s</sup>Indicated trademark is registered trademark of its respective owner.

## THE LEGACY OF STELARA®

# I HAVE A STELARA® PRESCRIPTION

COLLAPSED



## I HAVE A PRESCRIPTION

You don't have to go on your treatment journey alone. Learn more about the support resources that may be available to you and what to expect with STELARA®.

Stelara withMe

ONCE YOU AND YOUR DOCTOR HAVE DECIDED THAT STELARA® IS RIGHT FOR YOU

### DEDICATED HELP EVERY STEP OF THE WAY

Enroll Now

#### Nurse Navigator

When you enroll in STELARA withMe, you'll be contacted by a dedicated Nurse Navigator, a registered nurse\* who's just a phone call away. Your Nurse Navigator is ready to offer support and answer your questions about STELARA®, from how to self-inject to how to make the medication more affordable.

#### Treatment Support

Your Nurse Navigator can help provide infusion support and self-injection training. They can also offer support to help you stay on track throughout your treatment journey. Your doctor will review the injection process with you. Your doctor is the best person to help you understand what to expect.

#### Prescription & Cost Support

You'll receive support to help you understand your insurance, learn how to fill your prescriptions, and look for options that could make your treatment more affordable.†

\*Nurse Navigators do not provide medical advice. Please consult your doctor for any questions you have about your disease or therapy.

†Information about your insurance coverage, cost support options, and treatment support is given to you by service providers for STELARA withMe via Janssen CarePath. The information you get does not require you to use any Janssen product. STELARA withMe cost support is not for patients in the Johnson & Johnson Patient Assistance Foundation.

STELARA withMe is limited to education about STELARA®, its administration, and/or the condition it treats. It is not intended to provide medical advice, replace a treatment plan you receive from your doctor or nurse, or serve as a reason for you to start or stay on treatment.

Eligibility for program components may vary.

## IT'S EASY AND FREE TO ENROLL

Enroll Now  
After you sign up, your STELARA withMe Nurse Navigator will reach out to you within 1 to 2 business days.

Want to talk to someone sooner?  
Call us at 844-4withMe (844-494-8463)  
Monday-Friday | 8:00 AM - 8:00 PM ET

## STELARA withMe SAVINGS PROGRAM

IF YOU USE COMMERCIAL OR PRIVATE HEALTH INSURANCE TO PAY FOR YOUR MEDICATION  
**ELIGIBLE PATIENTS PAY \$5 PER DOSE FOR THEIR STELARA® MEDICATION**

- Eligible patients using commercial or private insurance can save on out-of-pocket medication costs for STELARA®
- Not valid for patients using Medicare, Medicaid, or other government-funded programs to pay for their medication
- Maximum program benefit per calendar year shall apply
- Terms expire at the end of each calendar year and may change
- Program does not cover the cost to give you your treatment

See program requirements

Enroll Now

### HEAR FROM A PATIENT

## MY STELARA withMe NURSE NAVIGATOR EXPERIENCE



Transcripts: English Español

Well, the Nurse Navigator... they're like family, actually. They listen to you.

MARY  
Actual Patient

## INFUSION & INJECTION DOSING INFORMATION

### Start with an IV infusion ONE TIME

STELARA® treatment starts with a one-time IV infusion through a vein in your arm that provides the amount of medication based on your body weight and is administered by a medical professional in a comfortable setting. It takes at least 1 hour to receive the full dose of medicine.

### Keep going with maintenance injections EVERY 2 MONTHS

After the one-time IV infusion, you will receive STELARA® as an injection under the skin (subcutaneous injection) every 8 weeks. STELARA® is intended for use under the guidance and supervision of your doctor. If your doctor decides that you or a caregiver may give your injections of STELARA® at home, you should receive training on the right way to prepare and inject STELARA®.

## Self-Injection at Home

The following video will provide an overview of self-injecting. Also be sure to thoroughly read the Medication Guide and Instructions for Use prior to injecting.

If you or your caregiver will be administering your STELARA® maintenance doses at home, you can get additional in-person injection training and support through your STELARA withMe Nurse Navigator.

Enroll Now



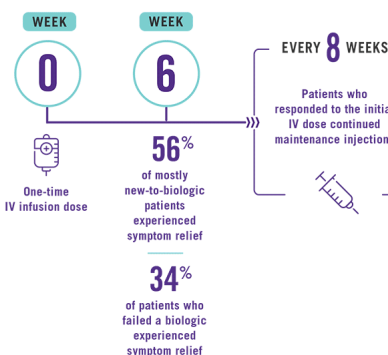
Transcripts: English Español

## LASTING REMISSION CAN START WITH STELARA®

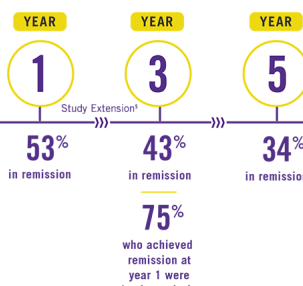
Clinical trials included patients who failed or were intolerant to other medications, including a biologic, prior to STELARA®. After only one IV dose of STELARA®, the majority of patients who were new to or had not failed a biologic found rapid relief from their Crohn's disease symptoms in just 6 weeks, with noticeable improvement as early as 3 weeks<sup>1</sup> for some. Additionally, the majority of patients were in remission at 1 year after responding to the induction dose and continuing treatment with STELARA®.

<sup>1</sup>Symptom improvement was measured differently at weeks 3 and 6.

### When could I feel better?



### For how long could I feel better?



<sup>1</sup>After 1 year, patients and healthcare providers knew that STELARA® was being used. This may have increased results. Individual results may vary. STELARA® is not for everyone. Only you and your doctor can decide if STELARA® is right for you.

## STELARA® SAFETY

Ask your doctor about the benefits and risks of STELARA®. Prescription medications, including STELARA®, have possible risks involved with treatment, so it's important to discuss them with your doctor.

What is the most important information I should know about STELARA®?

What are the common side effects of STELARA®?

What should I avoid while receiving STELARA®?



### IMPORTANT SAFETY INFORMATION

STELARA® (ustekinumab) is a prescription medicine that affects your immune system. STELARA® can increase your chance of having serious side effects including:

#### Serious Infections

STELARA® may lower your ability to fight infections and may increase your risk of infections. While taking STELARA®, some people have serious infections, which may require hospitalization, including tuberculosis (TB), and infections caused by bacteria, fungi, or viruses.

- Your doctor should check you for TB before starting STELARA® and watch you closely for signs and symptoms of TB during treatment with STELARA®.
- If your doctor feels that you are at risk for TB, you may be treated for TB before and during treatment with STELARA®. You should not start taking STELARA® if you have any kind of infection unless your doctor says it is okay.

#### Before starting STELARA®, tell your doctor if you:

- think you have an infection or have symptoms of an infection such as:
  - fever, sweats, or chills
  - muscle aches
  - cough
  - shortness of breath
  - blood in phlegm
- are being treated for an infection or have any open cuts.
- get a lot of infections or have infections that keep coming back.
- have TB, or have been in close contact with someone with TB.
- weight loss
- diarrhea or stomach pain
- burning when you urinate or urinate more often than normal
- feel very tired

After starting STELARA®, call your doctor right away if you have any symptoms of an infection (see above). These may be signs of infections such as chest infections, or skin infections or shingles that could have serious complications. STELARA® can make you more likely to get infections or make an infection that you have worse. People who have a genetic problem where the body does not make any of the proteins interleukin 12 (IL-12) and interleukin 23 (IL-23) are at a higher risk for certain serious infections that can spread throughout the body and cause death. People who take STELARA® may also be more likely to get these infections.

#### Cancers

STELARA® may decrease the activity of your immune system and increase your risk for certain types of cancer. Tell your doctor if you have ever had any type of cancer. Some people who had risk factors for skin cancer developed certain types of skin cancers while receiving STELARA®. Tell your doctor if you have any new skin growths.

#### Posterior Reversible Encephalopathy Syndrome (PRES)

PRES is a rare condition that affects the brain and can cause death. The cause of PRES is not known. If PRES is found early and treated, most people recover. Tell your doctor right away if you have any new or worsening medical problems including: headache, seizures, confusion, and vision problems.

#### Serious Allergic Reactions

Serious allergic reactions can occur. Stop using STELARA® and get medical help right away if you have any symptoms of a serious allergic reaction such as: feeling faint, swelling of your face, eyelids, tongue, or throat, chest tightness, or skin rash.

#### Lung Inflammation

Cases of lung inflammation have happened in some people who receive STELARA® and may be serious. These lung problems may need to be treated in a hospital. Tell your doctor right away if you develop shortness of breath or a cough that doesn't go away during treatment with STELARA®.

#### Before receiving STELARA®, tell your doctor about all of your medical conditions, including if you:

- have any of the conditions or symptoms listed above for serious infections, cancers, or PRES.
- ever had an allergic reaction to STELARA® or any of its ingredients. Ask your doctor if you are not sure.
- are allergic to latex. Some people cover on the prefilled syringe contains latex.
- have recently received or are scheduled to receive an immunization (vaccine). People who take STELARA® should not receive live vaccines. You should not receive the BCG vaccine during the one year before receiving STELARA® or one year after you stop receiving STELARA®.
- have any new or changing lesions within psoriasis areas or on normal skin.
- are receiving or have received allergy shots, especially for serious allergic reactions.
- receive or have received phototherapy for your psoriasis.
- are pregnant or plan to become pregnant. It is not known if STELARA® can harm your unborn baby. You and your doctor should decide if you will receive STELARA®.
- are breastfeeding or plan to breastfeed. It is thought that STELARA® passes into your breast milk.
- talk to your doctor about the best way to feed your baby if you receive STELARA®.

Tell your doctor about all the medicines you take, including prescription and over-the-counter medicines, vitamins, and herbal supplements. Know the medicines you take. Keep a list of them to show your doctor and pharmacist when you get a new medicine.

#### When prescribed STELARA®:

- Use STELARA® exactly as your doctor tells you to.
- STELARA® is intended for use under the guidance and supervision of your doctor. In children 6 years and older, it is recommended that STELARA® be administered by a healthcare provider. If your doctor decides that you or a caregiver may give your injections of STELARA® at home, you should receive training on the right way to prepare and inject STELARA®. Your doctor will determine the right dose of STELARA® for you, the amount for each injection, and how often you should receive it. Do not try to inject STELARA® yourself until you or your caregiver have been shown how to inject STELARA® by your doctor or nurse.

Common side effects of STELARA® include: nasal congestion, sore throat, and runny nose, upper respiratory infections, fever, headache, tiredness, itching, nausea and vomiting, redness at the injection site, vaginal yeast infections, urinary tract infections, sinus infection, bronchitis, diarrhea, stomach pain, and joint pain. These are not all of the possible side effects with STELARA®. Tell your doctor about any side effect that you experience. Ask your doctor or pharmacist for more information.

Please click to read the full Prescribing Information and Medication Guide for STELARA® and discuss any questions you have with your doctor.

You are encouraged to report negative side effects of prescription drugs to the FDA. Visit [www.fda.gov/medwatch](http://www.fda.gov/medwatch) or call 1-800-FDA-1088.

Requires Adobe® Reader®. [Click here to download](#)

cp-124932v6



© Janssen Biotech, Inc. 2023. This site is published by Janssen Biotech, Inc., which is solely responsible for its contents. The material on this site is intended only as informational and is not intended to be taken as medical advice. The ultimate responsibility for patient care rests with healthcare professionals. This information is intended for the use of patients and caregivers in the United States and Puerto Rico only. Laws, regulatory requirements, and medical practices for pharmaceutical products vary from country to country. The Prescribing Information includes but may not be limited to the following: Indications, Contraindications, Warnings, Precautions, Adverse Reactions, and Clinical Studies. Third party trademarks and logos are trademarks of their respective owners. Legal Notice | Privacy Policy | Contact Us | About Janssen Biotech, Inc. Do not sell my personal information. Last updated: February 2023

# SAVINGS COLLAPSED



## LEARN ABOUT COST SUPPORT OPTIONS

Information about treatment support, your insurance coverage, and potential out-of-pocket costs.

Once you and your doctor have decided STELARA® is right for you, STELARA withMe will help you find the resources you may need to get started and stay on track. We will give you information on your insurance coverage, potential out-of-pocket costs, and treatment support, and identify options that may help make your treatment more affordable.

### STELARA withMe SAVINGS PROGRAM

IF YOU USE COMMERCIAL OR PRIVATE HEALTH INSURANCE TO PAY FOR YOUR MEDICATION  
**ELIGIBLE PATIENTS PAY \$5 PER DOSE FOR THEIR STELARA® MEDICATION**

- ▶ Eligible patients using commercial or private insurance can save on out-of-pocket medication costs for STELARA®
- ▶ Not valid for patients using Medicare, Medicaid, or other government-funded programs to pay for their medication
- ▶ Maximum program benefit per calendar year shall apply
- ▶ Terms expire at the end of each calendar year and may change
- ▶ Program does not cover the cost to give you your treatment
- ▶ [See program requirements](#)

[Learn More](#)

STELARA withMe is limited to education about STELARA®, its administration, and/or the condition it treats. It is not intended to provide medical advice, replace a treatment plan you receive from your doctor or nurse, or serve as a reason for you to start or stay on treatment.

## BEYOND COMMERCIAL INSURANCE: WHERE TO LOOK FOR SAVINGS OPTIONS

I'm insured through Medicare Part D



I'm insured through Medicaid



I'm insured through VA, DoD, TRICARE, or I'm uninsured



LIST PRICE INFORMATION FOR STELARA®



#### IMPORTANT SAFETY INFORMATION

STELARA® (ustekinumab) is a prescription medicine that affects your immune system. STELARA® can increase your chance of having serious side effects including:

##### Serious Infections

STELARA® may lower your ability to fight infections and may increase your risk of infections. While taking STELARA®, some people have serious infections, which may require hospitalization, including tuberculosis (TB), and infections caused by bacteria, fungi, or viruses.

- Your doctor should check you for TB before starting STELARA® and watch you closely for signs and symptoms of TB during treatment with STELARA®.
- If your doctor feels that you are at risk for TB, you may be treated for TB before and during treatment with STELARA®. You should not start taking STELARA® if you have any kind of infection unless your doctor says it is okay.

##### Before starting STELARA®, tell your doctor if you:

- think you have an infection or have symptoms of an infection such as:
  - fever, sweats, or chills
  - muscle aches
  - cough
  - shortness of breath
  - blood in phlegm
- are being treated for an infection or have any open cuts.
- get a lot of infections or have infections that keep coming back.
- have TB, or have been in close contact with someone with TB.
- weight loss
- warm, red, or painful skin or sores on your body
- diarrhea or stomach pain
- burning when you urinate or urinate more often than normal
- feel very tired

**After starting STELARA®, call your doctor right away if you have any symptoms of an infection (see above).** These may be signs of infections such as chest infections, or skin infections or shingles that could have serious complications. STELARA® can make you more likely to get infections or make an infection that you have worse. People who have a genetic problem where the body does not make any of the proteins interleukin 12 (IL-12) and interleukin 23 (IL-23) are at a higher risk for certain serious infections that can spread throughout the body and cause death. People who take STELARA® may also be more likely to get these infections.

##### Cancers

STELARA® may decrease the activity of your immune system and increase your risk for certain types of cancer. Tell your doctor if you have ever had any type of cancer. Some people who had risk factors for skin cancer developed certain types of skin cancers while receiving STELARA®. Tell your doctor if you have any new skin growths.

##### Posterior Reversible Encephalopathy Syndrome (PRES)

PRES is a rare condition that affects the brain and can cause death. The cause of PRES is not known. If PRES is found early and treated, most people recover. Tell your doctor right away if you have any new or worsening medical problems including: headache, seizures, confusion, and vision problems.

##### Serious Allergic Reactions

Serious allergic reactions can occur. Stop using STELARA® and get medical help right away if you have any symptoms of a serious allergic reaction such as: feeling faint, swelling of your face, eyelids, tongue, or throat, chest tightness, or skin rash.

##### Lung Inflammation

Cases of lung inflammation have happened in some people who receive STELARA® and may be serious. These lung problems may need to be treated in a hospital. Tell your doctor right away if you develop shortness of breath or a cough that doesn't go away during treatment with STELARA®.

##### Before receiving STELARA®, tell your doctor about all of your medical conditions, including if you:

- have any of the conditions or symptoms listed above for serious infections, cancers, or PRES.
- ever had an allergic reaction to STELARA® or any of its ingredients. Ask your doctor if you are not sure.
- are allergic to latex. The needle cover on the prefilled syringe contains latex.
- have recently received or are scheduled to receive an immunization (vaccine). People who take STELARA® should not receive live vaccines. Tell your doctor if anyone in your house needs a live vaccine. The viruses used in some types of live vaccines can spread to people with a weakened immune system, and can cause serious problems. **You should not receive the BCG vaccine during the one year before receiving STELARA® or one year after you stop receiving STELARA®.**
- have any new or changing lesions within psoriasis areas or on normal skin.
- are receiving or have received allergy shots, especially for serious allergic reactions.
- receive or have received phototherapy for your psoriasis.
- are pregnant or plan to become pregnant. It is not known if STELARA® can harm your unborn baby. You and your doctor should decide if you will receive STELARA®.
- are breastfeeding or plan to breastfeed. It is thought that STELARA® passes into your breast milk.
- talk to your doctor about the best way to feed your baby if you receive STELARA®.

**Tell your doctor about all the medicines you take,** including prescription and over-the-counter medicines, vitamins, and herbal supplements. Know the medicines you take. Keep a list of them to show your doctor and pharmacist when you get a new medicine.

##### When prescribed STELARA®:

- Use STELARA® exactly as your doctor tells you to.
- STELARA® is intended for use under the guidance and supervision of your doctor. In children 6 years and older, it is recommended that STELARA® be administered by a healthcare provider. If your doctor decides that you or a caregiver may give your injections of STELARA® at home, you should receive training on the right way to prepare and inject STELARA®. Your doctor will determine the right dose of STELARA® for you, the amount for each injection, and how often you should receive it. Do not try to inject STELARA® yourself until you or your caregiver have been shown how to inject STELARA® by your doctor or nurse.

**Common side effects of STELARA® include:** nasal congestion, sore throat, and runny nose, upper respiratory infections, fever, headache, tiredness, itching, nausea and vomiting, redness at the injection site, vaginal yeast infections, urinary tract infections, sinus infection, bronchitis, diarrhea, stomach pain, and joint pain. These are not all of the possible side effects with STELARA®. Tell your doctor about any side effect that you experience. Ask your doctor or pharmacist for more information.

Please click to read the full [Prescribing Information](#) and [Medication Guide](#) for STELARA® and discuss any questions you have with your doctor.

You are encouraged to report negative side effects of prescription drugs to the FDA. Visit [www.fda.gov/medwatch](http://www.fda.gov/medwatch) or call 1-800-FDA-1088.

Requires Adobe® Reader®. [Click here to download](#)

cp-124932v6



© Janssen Biotech, Inc. 2025.

This site is published by Janssen Biotech, Inc., which is solely responsible for its contents. The material on this site is intended only as informational or an educational aid and it is not intended to be taken as medical advice. The ultimate responsibility for patient care resides with healthcare professionals.

This information is intended for the use of patients and caregivers in the United States and Puerto Rico only. Laws, regulatory requirements, and medical practices for pharmaceutical products vary from country to country. This Prescribing Information included here may not be appropriate for use outside the United States and Puerto Rico.

Third party trademarks used herein are trademarks of their respective owners.

Legal Notice | Privacy Policy | Contact Us | About Janssen Biotech, Inc.

Do not sell my personal information

Last Updated: February 2023

# RESOURCE GUIDE

## TOGGLE 1



Important Safety Information Prescribing Information Medication Guide Información en Español Healthcare Professionals Crohn's Disease

Home About STELARA® I Have a STELARA® Prescription Cost Support and More Resource Guide

## RESOURCE GUIDE

Looking for help navigating your treatment journey? Here's your road map to finding support when you need it.



### Dedicated help every step of the way

Once you and your doctor have decided STELARA® is right for you, resources may be available to help you throughout your treatment journey.



After you sign up, your STELARA withMe Nurse Navigator will contact you within 1 to 2 business days. Your dedicated STELARA withMe Nurse Navigator will listen to your needs and offer support and resources that are available to you, all with **YOUR** treatment journey in mind.

[Learn More](#)

STELARA withMe is limited to education about STELARA®, its administration, and/or the condition it treats. It is not intended to provide medical advice, replace a treatment plan you receive from your doctor or nurse, or serve as a reason for you to start or stop on treatment.



### Injections after the first IV dose

Self-injecting after your one-time IV infusion? Watch our video overview of self-injecting and sign up for in-person training with a registered nurse.



### Cost support and more

Once you and your doctor have decided STELARA® is right for you, there are resources to help you get started and stay on track.



### Proper disposal of used syringes

Safe Returns® is a simple, safe, and convenient way to dispose of your used syringes.



### Bathroom access when it's most urgent

Learn about the law that gets you bathroom access when you need it most.



janssen immunology

#### IMPORTANT SAFETY INFORMATION

STELARA® (ustekinumab) is a prescription medicine that affects your immune system. STELARA® can increase your chance of having serious side effects including:

##### Serious Infections

STELARA® may lower your ability to fight infections and may increase your risk of infections. While taking STELARA®, some people have serious infections, which may require hospitalization, including tuberculosis (TB), and infections caused by bacteria, fungi, or viruses.

- Your doctor should check you for TB before starting STELARA® and watch you closely for signs and symptoms of TB during treatment with STELARA®.
- If your doctor feels that you are at risk for TB, you may be treated for TB before and during treatment with STELARA®. You should not start taking STELARA® if you have any kind of infection unless your doctor says it is okay.

##### Before starting STELARA®, tell your doctor if you:

- think you have an infection or have symptoms of an infection such as:
  - fever, sweats, or chills
  - muscle aches
  - cough
  - shortness of breath
  - blood in phlegm
  - warm, red, or painful skin or sores on your body
  - diarrhea or stomach pain
  - burning when you urinate or urinate more often than normal
  - feel very tired
- are being treated for an infection or have any open cuts.
- get a lot of infections or have infections that keep coming back.
- have TB, or have been in close contact with someone with TB.

**After starting STELARA®, call your doctor right away if you have any symptoms of an infection (see above).** These may be signs of infections such as chest infections, or skin infections or shingles that could have serious complications. STELARA® can make you more likely to get infections or make an infection that you have worse. People who have a genetic problem where the body does not make any of the proteins interleukin 12 (IL-12) and Interleukin 23 (IL-23) are at a higher risk for certain serious infections that can spread throughout the body and cause death. People who take STELARA® may also be more likely to get these infections.

##### Cancers

STELARA® may decrease the activity of your immune system and increase your risk for certain types of cancer. Tell your doctor if you have ever had any type of cancer. Some people who had risk factors for skin cancer developed certain types of skin cancers while receiving STELARA®. Tell your doctor if you have any new skin growths.

##### Posterior Reversible Encephalopathy Syndrome (PRES)

PRES is a rare condition that affects the brain and can cause death. The cause of PRES is not known. If PRES is found early and treated, most people recover. Tell your doctor right away if you have any new or worsening medical problems including: headache, seizures, confusion, and vision problems.

##### Serious Allergic Reactions

Serious allergic reactions can occur. Stop using STELARA® and get medical help right away if you have any symptoms of a serious allergic reaction such as: feeling faint, swelling of your face, eyelids, tongue, or throat, chest tightness, or skin rash.

##### Lung Inflammation

Cases of lung inflammation have happened in some people who receive STELARA® and may be serious. These lung problems may need to be treated in a hospital. Tell your doctor right away if you develop shortness of breath or a cough that doesn't go away during treatment with STELARA®.

##### Before receiving STELARA®, tell your doctor about all of your medical conditions, including if you:

- have any of the conditions or symptoms listed above for serious infections, cancers, or PRES.
- ever had an allergic reaction to STELARA® or any of its ingredients. Ask your doctor if you are not sure.
- are allergic to latex. The needle cover on the prefilled syringe contains latex.
- have recently received or are scheduled to receive an immunization (vaccine). People who take STELARA® should not receive live vaccines. Tell your doctor if anyone in your household needs a live vaccine. The viruses used in some types of live vaccines can spread to people with a weakened immune system, and can cause serious problems. **You should not receive the BCG vaccine during the one year before receiving STELARA® or one year after you stop receiving STELARA®.**
- have any new or changing lesions within psoriasis areas or on normal skin.
- are receiving or have received allergy shots, especially for serious allergic reactions.
- receive or have received phototherapy for your psoriasis.
- are pregnant or plan to become pregnant. It is not known if STELARA® can harm your unborn baby. You and your doctor should decide if you will receive STELARA®.
- are breastfeeding or plan to breastfeed. It is thought that STELARA® passes into your breast milk.
- talk to your doctor about the best way to feed your baby if you receive STELARA®.

**Tell your doctor about all the medicines you take,** including prescription and over-the-counter medicines, vitamins, and herbal supplements. Know the medicines you take. Keep a list of them to show your doctor and pharmacist when you get a new medicine.

##### When prescribed STELARA®:

- Use STELARA® exactly as your doctor tells you to.
- STELARA® is intended for use under the guidance and supervision of your doctor. In children 6 years and older, it is recommended that STELARA® be administered by a healthcare provider. If your doctor decides that you or a caregiver may give you injections of STELARA® at home, you should receive training on the right way to prepare and inject STELARA®. Your doctor will determine the right dose of STELARA® for you, the amount for each injection, and how often you should receive it. Do not try to inject STELARA® yourself until you or your caregiver have been shown how to inject STELARA® by your doctor or nurse.

**Common side effects of STELARA® include:** nasal congestion, sore throat, and runny nose, upper respiratory infections, fever, headache, tiredness, itching, nausea and vomiting, redness at the injection site, vaginal yeast infections, urinary tract infections, sinus infection, bronchitis, diarrhea, stomach pain, and joint pain. These are not all of the possible side effects with STELARA®. Tell your doctor about any side effect that you experience. Ask your doctor or pharmacist for more information.

Please click to read the full [Prescribing Information](#) and [Medication Guide](#) for STELARA® and discuss any questions you have with your doctor.

You are encouraged to report negative side effects of prescription drugs to the FDA. Visit [www.fda.gov/medwatch](http://www.fda.gov/medwatch) or call 1-800-FDA-1088.

Requires Adobe® Reader®. [Click here to download](#)

cp-124932v6

janssen immunology

© Janssen Biotech, Inc. 2023.

This site is published by Janssen Biotech, Inc., which is solely responsible for its contents. The material on this site is intended only as informational and is not intended to be taken as medical advice. The ultimate responsibility for patient care resides with a healthcare professional.

This information is intended for the use of patients and caregivers in the United States and Puerto Rico only. Laws, regulatory requirements, and medical practices for pharmaceutical products vary from country to country. The Prescribing Information included here may not be appropriate for use outside the United States or Puerto Rico.

Third party trademarks used herein are trademarks of their respective owners.

Legal Notice | Privacy Policy | Contact Us | About Janssen Biotech, Inc.

Stelara withMe

Do not self-medicate

Last Updated: February 2023

# RESOURCE GUIDE

TOGGLE 5



## RESOURCE GUIDE

Looking for help navigating your treatment journey? Here's your road map to finding support when you need it.



### Dedicated help every step of the way

Once you and your doctor have decided STELARA® is right for you, resources may be available to help you throughout your treatment journey.



### Injections after the first IV dose

Self-injecting after your one-time IV infusion? Watch our video overview of self-injecting and sign up for in-person training with a registered nurse.



### Cost support and more

Once you and your doctor have decided STELARA® is right for you, there are resources to help you get started and stay on track.



### Proper disposal of used syringes

Safe Returns® is a simple, safe, and convenient way to dispose of your used syringes.



### Bathroom access when it's most urgent

Learn about the law that gets you bathroom access when you need it most.



When a 14-year-old Crohn's disease patient named Ally was denied restroom access at a popular Chicago mall, she decided to act.

In 2005, the Restroom Access Act—also known as **Ally's Law**—was passed. It states that retail stores that do not have a public restroom must provide access to their employee restroom to any person with a medical condition, including Crohn's disease and ulcerative colitis. As of February 2023, it has been passed into law in 20 states and the District of Columbia. Included here is a restroom access card that will assert your legal right to a bathroom in those states.

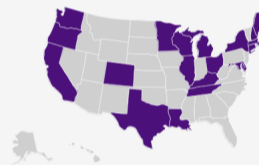
### Get your bathroom access card



Download

### States that enforce Ally's Law:

- |                      |               |
|----------------------|---------------|
| California           | Michigan      |
| Colorado             | Minnesota     |
| Connecticut          | New Hampshire |
| Delaware             | New York      |
| District of Columbia | Ohio          |
| Illinois             | Oregon        |
| Kentucky             | Tennessee     |
| Louisiana            | Texas         |
| Maine                | Washington    |
| Maryland             | Wisconsin     |
| Massachusetts        |               |



Don't see your state on the list? You can reach out to the state legislature to see if they would consider supporting the adoption of Ally's Law.

Restroom Access, Crohn's & Colitis Foundation. Accessed Feb. 23, 2023  
<https://www.crohncolitisfoundation.org/get-involved/be-an-advocate/restroom-access>



### IMPORTANT SAFETY INFORMATION

STELARA® (ustekinumab) is a prescription medicine that affects your immune system. STELARA® can increase your chance of having serious side effects including:

#### Serious Infections

- STELARA® may lower your ability to fight infections and may increase your risk of infections. While taking STELARA®, some people have serious infections, which may require hospitalization, including tuberculosis (TB), and infections caused by bacteria, fungi, or viruses.
- Your doctor should check you for TB before starting STELARA® and watch you closely for signs and symptoms of TB during treatment with STELARA®.
- If your doctor feels that you are at risk for TB, you may be treated for TB before and during treatment with STELARA®. You should not start taking STELARA® if you have any kind of infection unless your doctor says it is okay.

#### Before starting STELARA®, tell your doctor if you:

- think you have an infection or have symptoms of an infection such as:
  - fever, sweats, or chills
  - weight loss
  - muscle aches
  - warm, red, or painful skin or sores on your body
  - cough
  - diarrhea or stomach pain
  - shortness of breath
  - burning when you urinate or urinate more often than normal
  - blood in phlegm
  - feel very tired
- are being treated for an infection or have any open cuts.
- get a lot of infections or have infections that keep coming back.
- have TB, or have been in close contact with someone with TB.

**After starting STELARA®, call your doctor right away if you have any symptoms of an infection (see above).** These may be signs of infections such as chest infections, or skin infections or shingles that could have serious complications. STELARA® can make you more likely to get infections or make an infection that you have worse. People who have a genetic problem where the body does not make any of the proteins interleukin 12 (IL-12) and interleukin 23 (IL-23) are at a higher risk for certain serious infections that can spread throughout the body and cause death. People who take STELARA® may also be more likely to get these infections.

#### Cancers

STELARA® may decrease the activity of your immune system and increase your risk for certain types of cancer. Tell your doctor if you have ever had any type of cancer. Some people who had risk factors for skin cancer developed certain types of skin cancers while receiving STELARA®. Tell your doctor if you have any new skin growths.

#### Posterior Reversible Encephalopathy Syndrome (PRES)

PRES is a rare condition that affects the brain and can cause death. The cause of PRES is not known. If PRES is found early and treated, most people recover. Tell your doctor right away if you have any new or worsening medical problems including: headache, seizures, confusion, and vision problems.

#### Serious Allergic Reactions

Serious allergic reactions can occur. Stop using STELARA® and get medical help right away if you have any symptoms of a serious allergic reaction such as: feeling faint, swelling of your face, eyelids, tongue, or throat, chest tightness, or skin rash.

#### Lung Inflammation

Cases of lung inflammation have happened in some people who receive STELARA® and may be serious. These lung problems may need to be treated in a hospital. Tell your doctor right away if you develop shortness of breath or a cough that doesn't go away during treatment with STELARA®.

#### Before receiving STELARA®, tell your doctor about all of your medical conditions, including if you:

- have any of the conditions or symptoms listed above for serious infections, cancers, or PRES.
- ever had an allergic reaction to STELARA® or any of its ingredients. Ask your doctor if you are not sure.
- are allergic to latex. The needle cover on the prefilled syringe contains latex.
- have recently received or are scheduled to receive an immunization (vaccine). People who take STELARA® should not receive live vaccines. Tell your doctor if anyone in your house needs a live vaccine. The viruses used in some types of live vaccines can spread to people with a weakened immune system, and can cause serious problems. **You should not receive the BCG vaccine during the one year before receiving STELARA® or one year after you stop receiving STELARA®.**
- have any new or changing lesions within psoriasis areas or on normal skin.
- are receiving or have received allergy shots, especially for serious allergic reactions.
- receive or have received phototherapy for your psoriasis.
- are pregnant or plan to become pregnant. It is not known if STELARA® can harm your unborn baby. You and your doctor should decide if you will receive STELARA®.
- are breastfeeding or plan to breastfeed. It is thought that STELARA® passes into your breast milk.
- talk to your doctor about the best way to feed your baby if you receive STELARA®.

**Tell your doctor about all the medicines you take,** including prescription and over-the-counter medicines, vitamins, and herbal supplements. Know the medicines you take. Keep a list of them to show your doctor and pharmacist when you get a new medicine.

#### When prescribed STELARA®:

- Use STELARA® exactly as your doctor tells you to.
- STELARA® is intended for use under the guidance and supervision of your doctor. In children 6 years and older, it is recommended that STELARA® be administered by a healthcare provider. If your doctor decides that you or a caregiver may give you injections of STELARA® at home, you should receive training on the right way to prepare and inject STELARA®. Your doctor will determine the right dose of STELARA® for you, the amount for each injection, and how often you should receive it. Do not try to inject STELARA® yourself until you or your caregiver have been shown how to inject STELARA® by your doctor or nurse.

**Common side effects of STELARA® include:** nasal congestion, sore throat, and runny nose, upper respiratory infections, fever, headache, tiredness, itching, nausea and vomiting, redness at the injection site, vaginal yeast infections, urinary tract infections, sinus infection, bronchitis, diarrhea, stomach pain, and joint pain. These are not all of the possible side effects with STELARA®. Tell your doctor about any side effect that you experience. Ask your doctor or pharmacist for more information.

Please click to read the full [Prescribing Information](#) and [Medication Guide](#) for STELARA® and discuss any questions you have with your doctor.

You are encouraged to report negative side effects of prescription drugs to the FDA. Visit [www.fda.gov/medwatch](http://www.fda.gov/medwatch) or call 1-800-FDA-1088.

Requires Adobe® Reader®. [Click here to download](#)

cp-124932v6



© Janssen Biotech, Inc. 2023.

This site is published by Janssen Biotech, Inc., which is solely responsible for its contents. The material on this site is intended only as informational and is not intended to be taken as medical advice. The ultimate responsibility for patient care resides with a healthcare professional.

This information is intended for the use of patients and caregivers in the United States and Puerto Rico only. Laws, regulatory requirements, and medical practices for pharmaceutical products vary from country to country. The Prescribing Information included here may not be appropriate for use outside the United States and Puerto Rico.

Third party trademarks used herein are trademarks of their respective owners.

Legal Notice | Privacy Policy | Contact Us | About Janssen Biotech, Inc.

Do not sell my personal information

Last Updated: February 2023

